

The Traffic Management Experts.

TRAFFIC MANAGEMENT

 [HERITAGETRAFFIC.COM.AU](https://www.heritagetraffic.com.au)

 1800 353 053

 sales@heritagetraffic.com.au

 25 Spine Street, Sumner, QLD, 4074



Professional, Experienced, Environmentally FRIENDLY.

ABOUT HERITAGE TRAFFIC CONTROL.

Established in 2025 and based in Queensland, Australia; Heritage Traffic Management is committed to providing the highest quality services when it comes to Traffic Control and Management. We are a 100% environmentally conscious company that takes sustainability and preservation very seriously while striving to maintain the highest standards of service in Traffic Control and Management.

Our vision at Heritage Traffic Management is to continue to be an industry leader by delivering top quality TMP's, TGS, Audits and so much more. Respecting our clients, their property and the environment in which we are working, we are committed to investing time and money into our people to ensure that they are equipped with the skills required to meet the high standards of quality we provide.

"Together everyone achieves more."

WHAT AREAS DO YOU SERVICE?

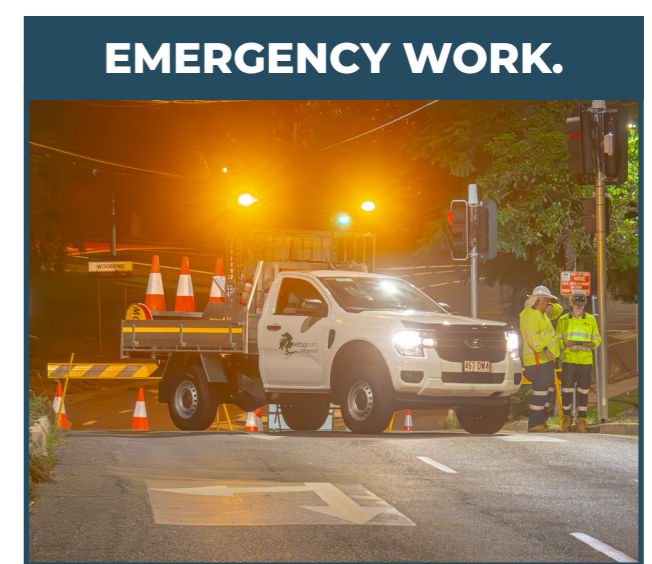
Across Brisbane, the Gold Coast and South East Queensland, we provide traffic management to major infrastructure, road and civil works with a focus on risk mitigation and operational compliance. Our service range includes but is not limited to:



Our Services.

QUALITY SERVICES.

Heritage Traffic Control offers a wide range of services, capable of tackling any job size related to traffic control or management. If you aren't sure of our capabilities, give us a call.



Traffic Management.

WHAT IS TRAFFIC MANAGEMENT?

Traffic management is the coordinated planning, control, and supervision of vehicles, pedestrians, and work zones to ensure safety, efficiency, and compliance with regulations. It plays a vital role in reducing congestion, preventing accidents, and keeping infrastructure projects, events, and daily road use flowing smoothly. From major highways to local streets, effective traffic management protects road users and workers while maintaining public confidence in transport systems.

WHY TRAFFIC MANAGEMENT MATTERS.

Every road project, utility upgrade, or large-scale event carries risks without proper oversight. A well-designed traffic management plan prioritises:



Compliance

All services we provide undergo an extremely rigorous and meticulous examination to ensure they meet all state, council and insurance requirements.



Efficiency

Traffic Management is critical to minimising delays and disruptions to road users and the local community.



Safety

Protects road users, pedestrians and on-site workers from easily avoidable accidents.



Sustainability

Reduces the environmental impacts caused by heavy congestion and detours.



Temporary signal lights can assist traffic controllers with ensuring a steady flow of traffic while works are undertaken.

Traffic Management.

KEY COMPONENTS OF TRAFFIC MANAGEMENT.

Professional traffic management involves a combination of planning, equipment, and skilled personnel. Whether it's a short-term road closure or a long-term infrastructure upgrade, strategic traffic management ensures that projects can be delivered on time and with minimal disruption.

OUR COMMITMENT TO SAFETY AND COMPLIANCE.

Safety is our number one priority at Heritage Traffic Management. We employ accredited traffic controllers and use modern equipment to deliver reliable, compliant solutions. Every Traffic Management Plan and Traffic Guidance Scheme is designed to meet legislative requirements and insurance standards, ensuring peace of mind for our clients.



Traffic control trucks can help assist drivers by warning them well in advance that there are road works in progress ahead.



Road safety is not something to be taken lightly. Heritage Traffic Management makes every effort to adhere and follow the correct procedures and regulations so as to make our worksite's as safe as possible for both workers and drivers.

WHY CHOOSE HERITAGE TRAFFIC MANAGEMENT?

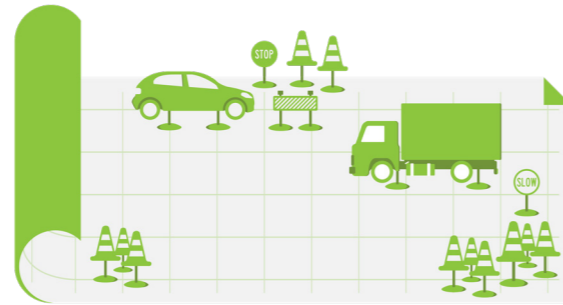
Choosing an experienced traffic management provider ensures that your project is supported from planning through to delivery. Professional oversight reduces risks, protects your workforce, and ensures you meet strict compliance standards, all while keeping the community moving. Partnering with us means:

- » A team of licensed and highly trained professionals.
- » Innovative solutions customised to your project needs.
- » Proven experience across councils, construction, and private sectors.
- » 24/7 support for urgent and scheduled works.

Traffic Guidance Schemes.

WHAT IS A TRAFFIC GUIDANCE SCHEME?

A Traffic Guidance Scheme (TGS) is the detailed, site-specific drawing that shows how the TMP will be implemented in practice. Both documents are mandatory for obtaining approvals from road authorities, councils, and in many cases, insurance providers.



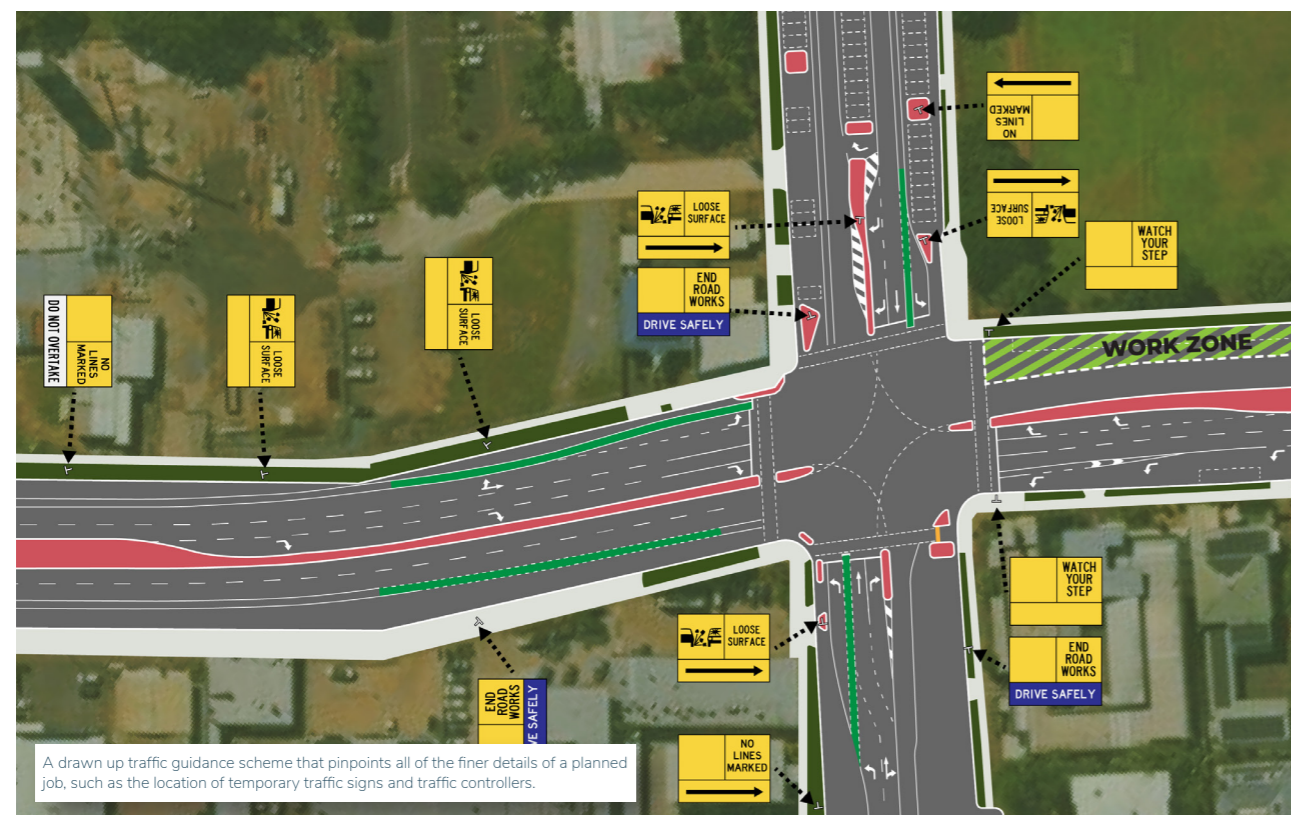
HOW DO WE CREATE A TGS?

A TGS is the operational drawing that translates the TMP into a site-ready plan. In the state of Queensland, TGS designs:

- » **MUST** be prepared and certified by an accredited Traffic Management Designer (TMD).
- » **MUST** use symbology and layout consistent with TMR MUTCD Part 3
- » **MUST** include details such as sign types and codes, taper lengths, bugger zones, posted speed limits and lane configurations.
- » **MUST** address pedestrian and cyclist movements, disability access (DDA compliance) and public transport interferences.
- » **MUST** nominate the number and location of Traffic Control (TC's) persons if required.
- » **MUST** indicate staging/sequencing for works of longer duration or multi-phase projects



A TGS needs to incorporate a wide range of details such as the location of signs, on-site traffic controllers and any other appropriate obstructions or obstacles that may be present.



A drawn up traffic guidance scheme that pinpoints all of the finer details of a planned job, such as the location of temporary traffic signs and traffic controllers.

Traffic Management Plans.

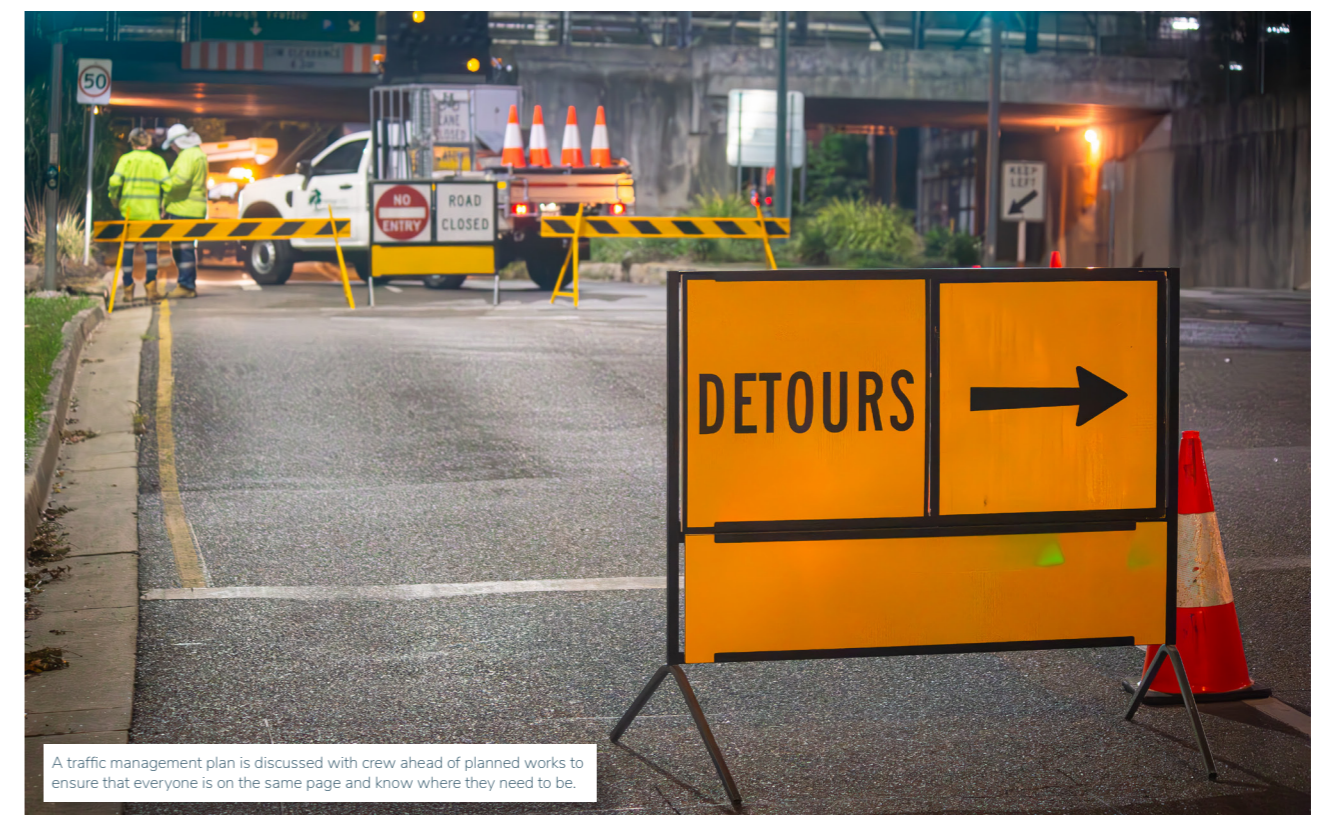
WHAT IS A TRAFFIC MANAGEMENT PLAN?

A Traffic Management Plan (TMP) is a strategic document that demonstrates how road safety risks will be managed. Traffic Management Plans must be prepared in line with TMR's Traffic Management for Works on Roads Code of Practice (TM-CoP). TMP's generally include a list of details about the works being undertaken such as:

- » **The Scope of the Work(s)** being undertaken, the location of the worksite, expected duration of the job alongside a **risks assessment** for potential delays and a description of the job itself.
- » **Risk Assessments** which identify hazards both on, under or near the worksite, the likelihood of the hazard being an issue and **control measures in place** to deal with them if necessary.
- » **Roles and Responsibilities** for positions overseeing the work which includes but is not limited to; Principal Contractor, Traffic Management Designer, Traffic Management Implementation Team and the Site Supervisor.
- » **Emergency Plans and Procedures** in the event of an accident. This includes **access for emergency vehicles**, breakdown response procedures and evacuation plans.
- » **Worker and Public Safety Considerations** that include safe entry/exit points, worksite delineation and fatigue management.



Traffic Management Plans (TMP's) often consist of dozens of pages that cover very specific aspects of worksites in or around public roads.



A traffic management plan is discussed with crew ahead of planned works to ensure that everyone is on the same page and know where they need to be.

Long-Term Signage.

WHY IS SIGNAGE SO IMPORTANT ANYWAY?

The installation and maintenance of long-term signage is critical to ensuring road safety, regulatory compliance, and clear communication with motorists and pedestrians. In Queensland, permanent and long-duration temporary signage must comply with the **Manual of Uniform Traffic Control Devices (MUTCD)**, **Austrroads Guide to Temporary Traffic Management (AGTTM)**, and relevant **Australian Standards (AS 1742 series)**.

APPLICATIONS OF LONG-TERM SIGNAGE.

-  **Extended civil construction projects** (bridges, highways, tunnels, etc.)
-  **Utility installations and/or relocations** that require prolonged detours or reduced speed zones.
-  **Major events** that will impact traffic over several weeks or months such as the Olympic Games or major festivals.
-  **Council infrastructure works** that require staged traffic management.
-  **State-controlled road projects** where compliance with regulations and durability are critical.



Long-Term Signage indicates to drivers that planned roadworks are expected to cause delays for extended periods of time, usually greater than one day in length.



Long-term signage helps maintain safety and assist with the flow of traffic even when traffic controllers are not present on site, ie when works are expected to take over a day to complete.



Major roadworks or maintenance projects may sometimes facilitate the closure of entire roads

Traffic Management Permits.

PERMIT APPLICATIONS IN QUEENSLAND.

Before any works affecting a road corridor can commence in Queensland, contractors are required to obtain approval from the relevant authority. This process involves submitting a permit application supported by compliant Traffic Management Plans (TMPs) and Traffic Guidance Schemes (TGS).



Department of Transport and Main Roads (TMR).

For works conducted on or near state-controlled roads, permits must be obtained from the Department of Transport and Main Roads (TMR). TMR approval is particularly important for projects involving lane closures, temporary traffic diversions, or activities that may impact traffic flow on major routes.



Local Council.

When works occur on council-managed roads, verges, or footpaths, approval from the relevant local council is typically required in order to ensure public safety, access and amenity within their jurisdictions.



Other Stakeholders.

Depending on the location and potential impacts of the works, additional permits or notifications may be required from other stakeholders such as the Queensland Police Service, public transport operators, or utility providers.



The process for getting permits to conduct certain works on roads takes both time and needs to undergo several checks before being approved.



Major roadworks or maintenance projects may sometimes facilitate the closure of entire roads

Site Inspections & Audits.

SITE INSPECTIONS.

Traffic management is not just about planning and implementation, it also requires ongoing site inspections, audits, and recommendations to verify compliance, identify risks, and maintain the highest safety standards. In Queensland, these processes are mandated under the Traffic Management for Works on Roads Code of Practice (TM-CoP 2021) and monitored by the Department of Transport and Main Roads (TMR).

SITE AUDITS.

Following inspections, clear recommendations are provided to ensure ongoing safety and compliance. These may include actions to rectify immediate safety concerns, adjust signage layouts, buffer zones, or speed restrictions, and improve pedestrian and cyclist access in line with Disability Discrimination Act (DDA) requirements.



Site inspections can help identify previously unidentified risks that might pose safety hazards or delays to the work of projects.

Disaster Management.

WHAT IS DISASTER MANAGEMENT?

When natural disasters or emergencies strike, roads and transport corridors are often among the most severely affected. From flooding and cyclones to bushfires and major accidents, ensuring safe access for emergency services, utility providers, and the community is critical. Emergency and disaster work in traffic management involves the rapid deployment of accredited personnel, compliant traffic control devices, and safe diversion routes to protect workers and the public while restoring access as quickly as possible.



Cyclones and Major Weather Events:
Clearing fallen trees, debris, and damaged infrastructure.



Bushfires:
Maintaining safe corridors for firefighting vehicles and community evacuations.



Storm and Flood Response:
Road closures, detours, and access control for repair crews.



Major Accidents:
Traffic redirection, site protection, and safe clearance zones.



HERITAGETRAFFIC.COM.AU

1800 353 053

sales@heritagetrtraffic.com.au

